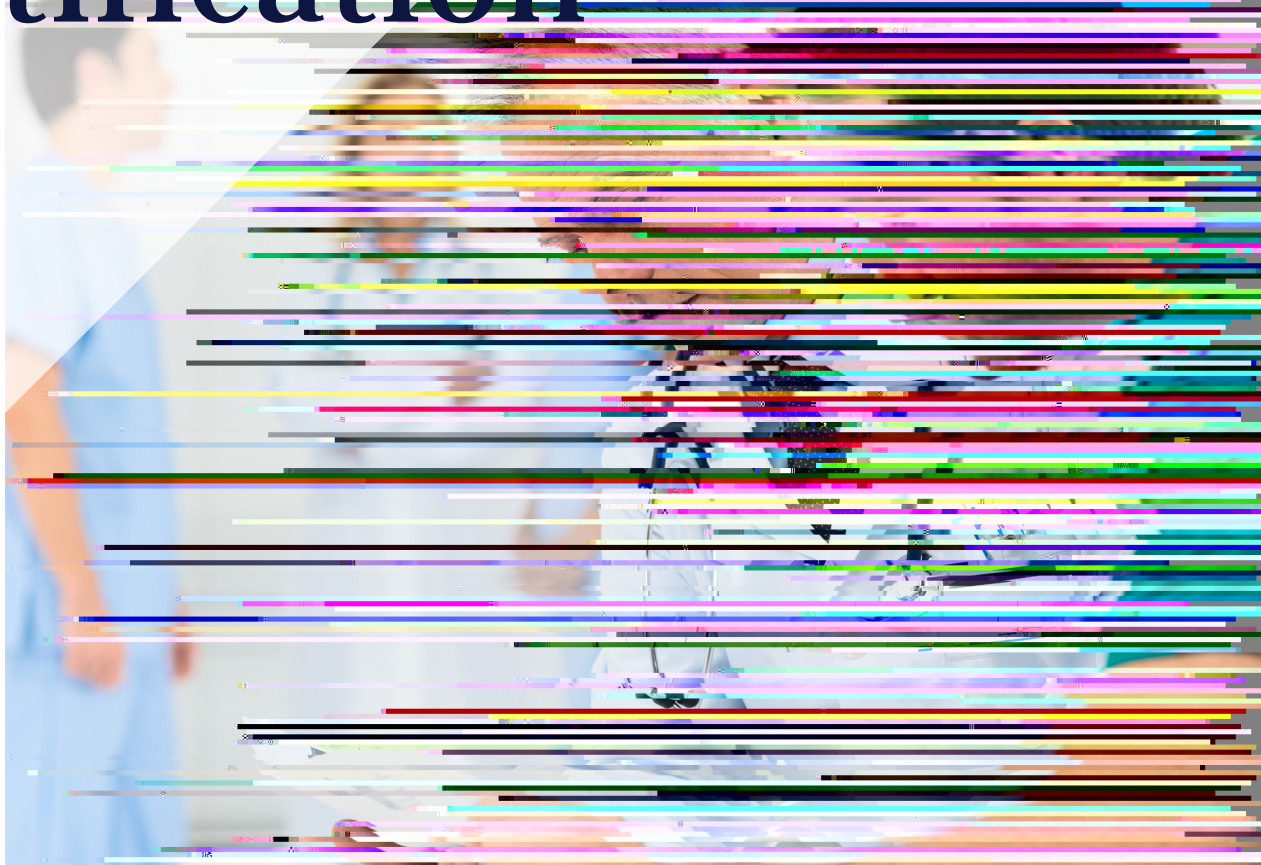
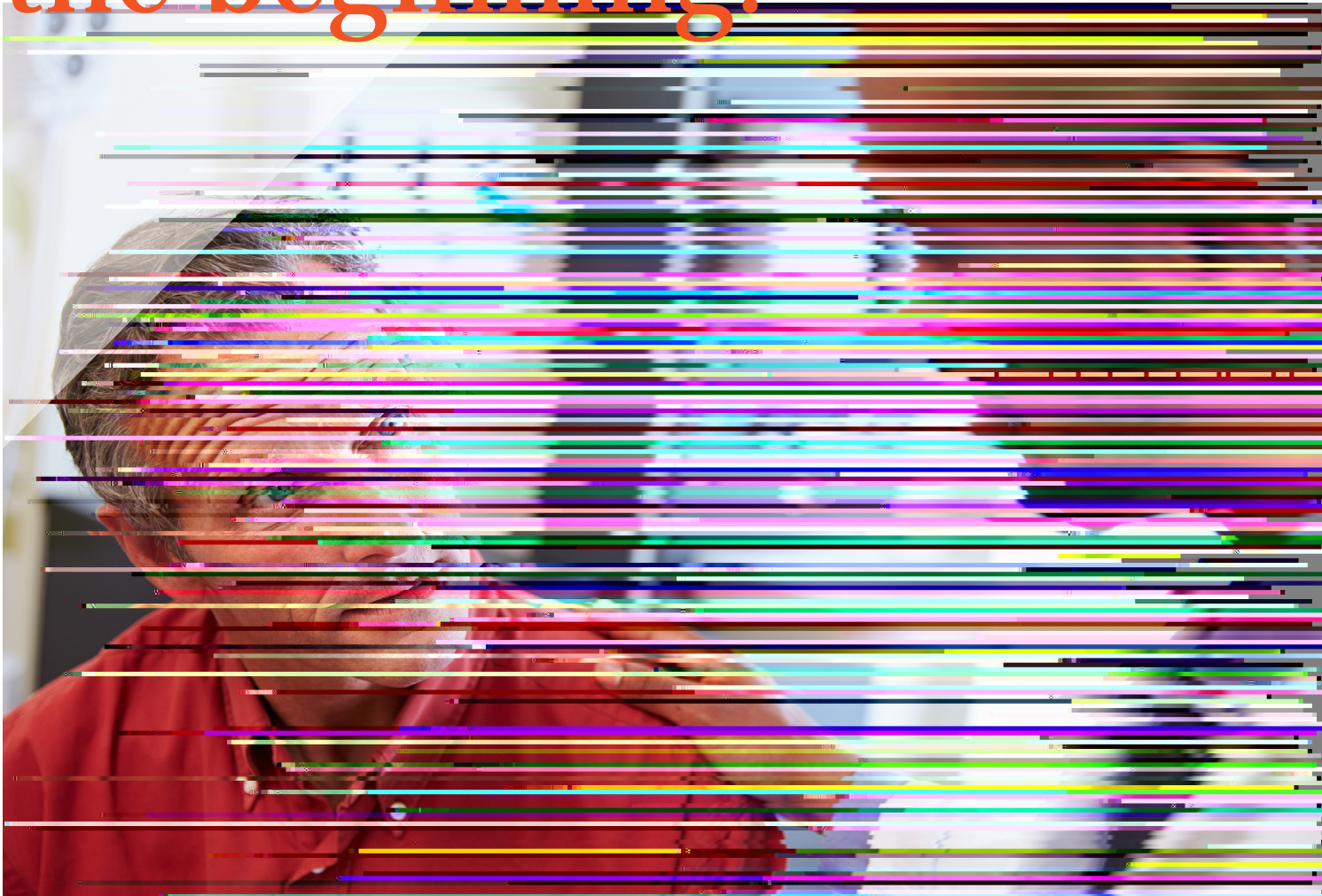


Advanced Cardiac Certification



Accreditation is just the beginning.





Get on Track for Achieving Certification

Be e a a a d a e f h a e ce ca .



... a ed a a
ca e a d e he
a e e e e ce



R . ef ce c a d
c e a a e a
e c



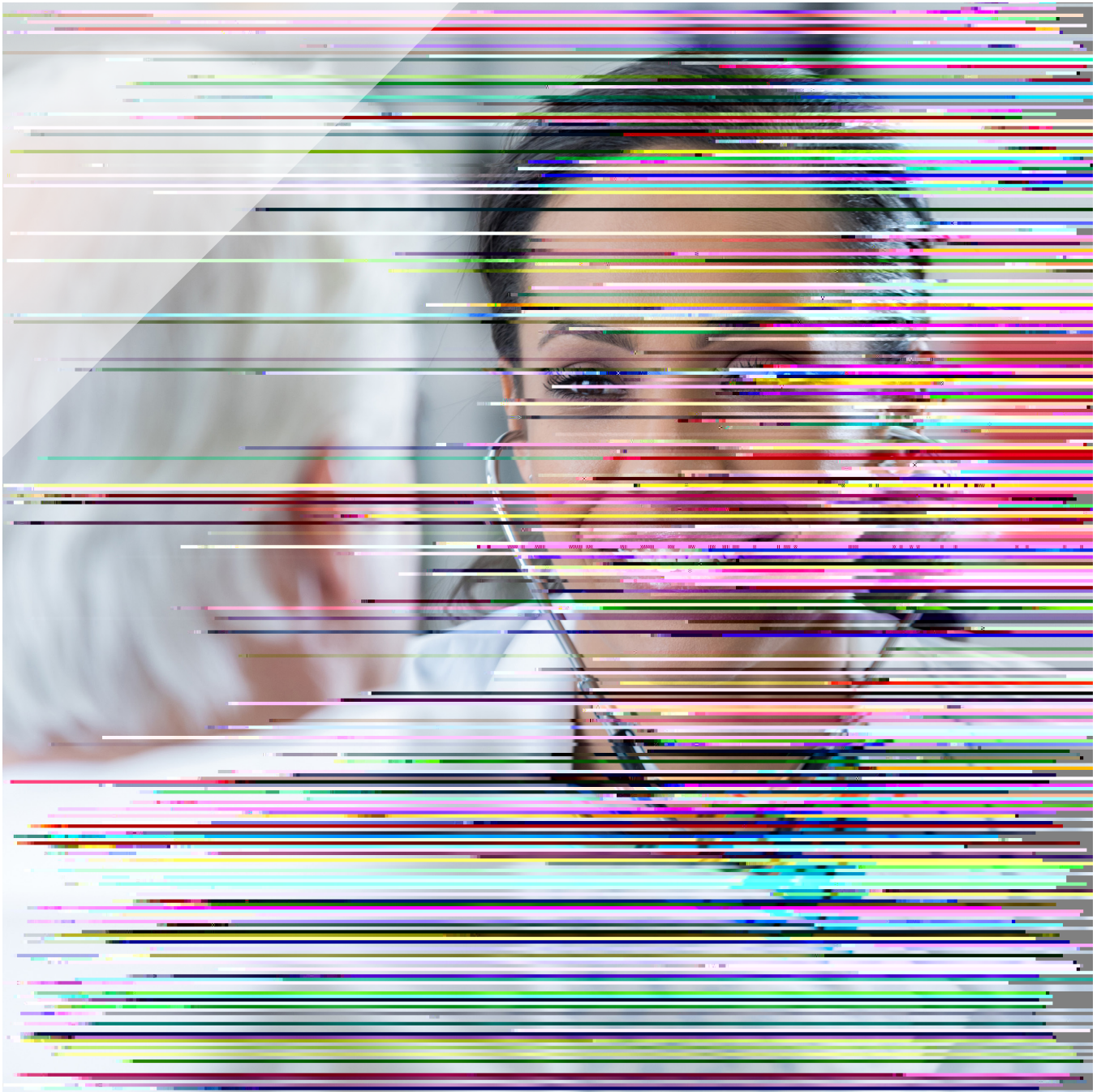
J c ca a d
c ab a a
a d c e



J e ce
e effec e face
e cha e e



R ac e f
e ce e ce b e e
a d ec e f a e



Comprehensive Cardiac Center (CCC) Certification

What is Comprehensive Cardiac Center (CCC) Certification?

CCC certification is a voluntary program for hospitals with robust cardiac care services seeking to evaluate, evolve and elevate patient care across an extensive array of cardiac domains. Developed in partnership with a technical advisory panel of clinicians with specific expertise in the field, and with input from the American Heart Association, this

program is designed to recognize hospitals demonstrating consistent, comprehensive excellence.

CCC certification touches every point in your continuum of care, so that you09f4BDC B1a.cMC P £20M



Eligibility & Requirements

Three Heart Attack Center Certifications

These Advanced Disease-Specific Care certification programs are for ST-elevation myocardial infarction (STEMI) heart attack patient care. The certifications focus on symptom onset and first medical contact (prehospital and upon hospital arrival),

emergency medical services, the emergency department, as well as catheterization laboratories and inpatient settings.

- Comprehensive Heart Attack Center
- Primary Heart Attack Center
- Acute Heart Attack Ready

Value of Certification

These programs, offered in collaboration with the American Heart Association meet the characteristics of levels I, II, or III hospitals within a STEMI System of Care. Certification will help you standardize and improve coordinated systems of care across settings regarding identification, assessment, monitoring management, data sharing, and performance



improvement for multidisciplinary STEMI heart attack care.

The American Heart Association recently published a policy statement, [Systems of Care for ST-Segment-Elevation Myocardial Infarction](#). This statement sets forth recommendations

for how the ideal STEMI system of care should be designed and implemented to ensure that patients with STEMI receive the best evidence-based care at each stage in their illness.



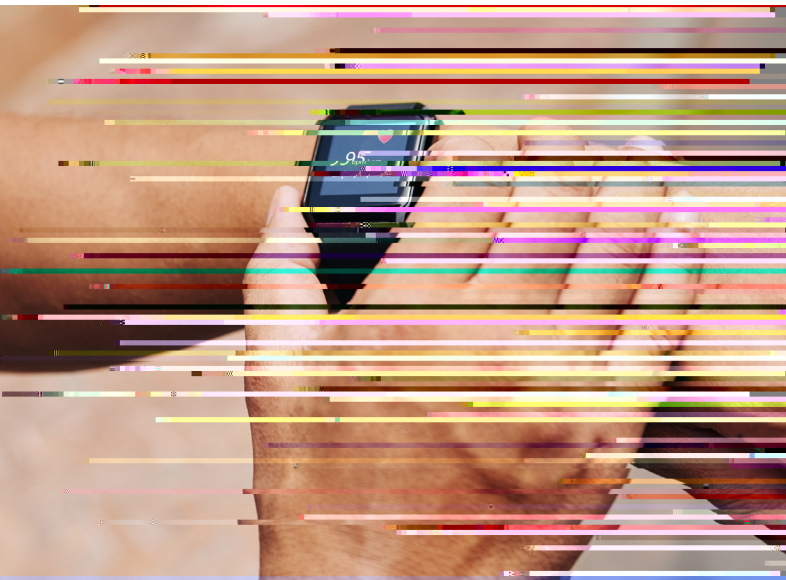


Eligibility & Requirements

- Meet eligibility requirements outlined in the Comprehensive Certification Manual for Disease-Specific Care Including Advanced Programs for Disease-Specific Care
- Acute Heart Attack Ready centers do not provide on-site primary PCI coverage 24 hours a day, 7 days a week, or at all
- Primary Heart Attack Centers must provide on-site primary percutaneous coronary intervention (PCI) coverage for STEMI patients 24 hours a day, 7 days a week
- Comprehensive Heart Attack Centers provide

Advanced Heart Failure Certification

Elevate your ability to deliver best-in-class service and care with Advanced Certification in Heart Failure (ACHF).



Meet the standards, choose and implement clinical practice guidelines and measure against standardized performance measures which provide for assessment, monitoring, management and performance improvement for heart failure care.

There is a special focus on the inpatient setting and a thorough assessment of care, including transition to outpatient heart failure care providers. This certification is offered in collaboration with the American Heart Association.



Eligibility & Requirements

Your organization is eligible to earn the ACHF if you:

- Meet eligibility requirements outlined in the Comprehensive Certification Manual for Disease-Specific Care Including Advanced Programs for Disease-Specific Care
- Have an established inpatient heart failure clinical treatment program
- Provide ambulatory care services through a hospital-based and hospital-owned heart failure clinic OR a collaborative relationship with one or more cardiology practices

Standards & Guidelines

- Uses advanced Disease-Specific Care standards and additional expectations for transition of care
- Organization chooses and implements heart failure clinical practice guidelines
- Organization must track performance measures
- Organization must participate in the American Heart Association's Get With The Guidelines® Heart Failure registry

To help you prepare for success during the certification process—and to address quality issues beyond—we provide you with a host of trusted, expert resources.

To further advance knowledge and expertise across your spectrum of services, our not-for-profit affiliate, Joint Commission Resources,

Your Source for Cardiac Certification

In addition to these advanced certifications, The Joint Commission also offers a collection of core, or foundational, cardiac certifications. Whether you're looking to elevate a single cardiac specialty or strengthen your performance across your entire care continuum, The Joint Commission can help. With our suite of cardiac offerings—backed by the expertise and insight of our robust cardiac care experience—you will find the guidance, knowledge and framework you need to achieve improved outcomes and continued success.

For more information, visit [www.jointcommission.org](#)





One Renaissance Boulevard
Oakbrook Terrace, IL 60181
630-792-5800

jointcommission.org